



Jan V. Biella, Deputy SHPO FCC 6/24/14



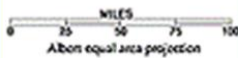
nationalatlas.gov™
Where We Are

NEW MEXICO

FEDERAL LANDS AND INDIAN RESERVATIONS

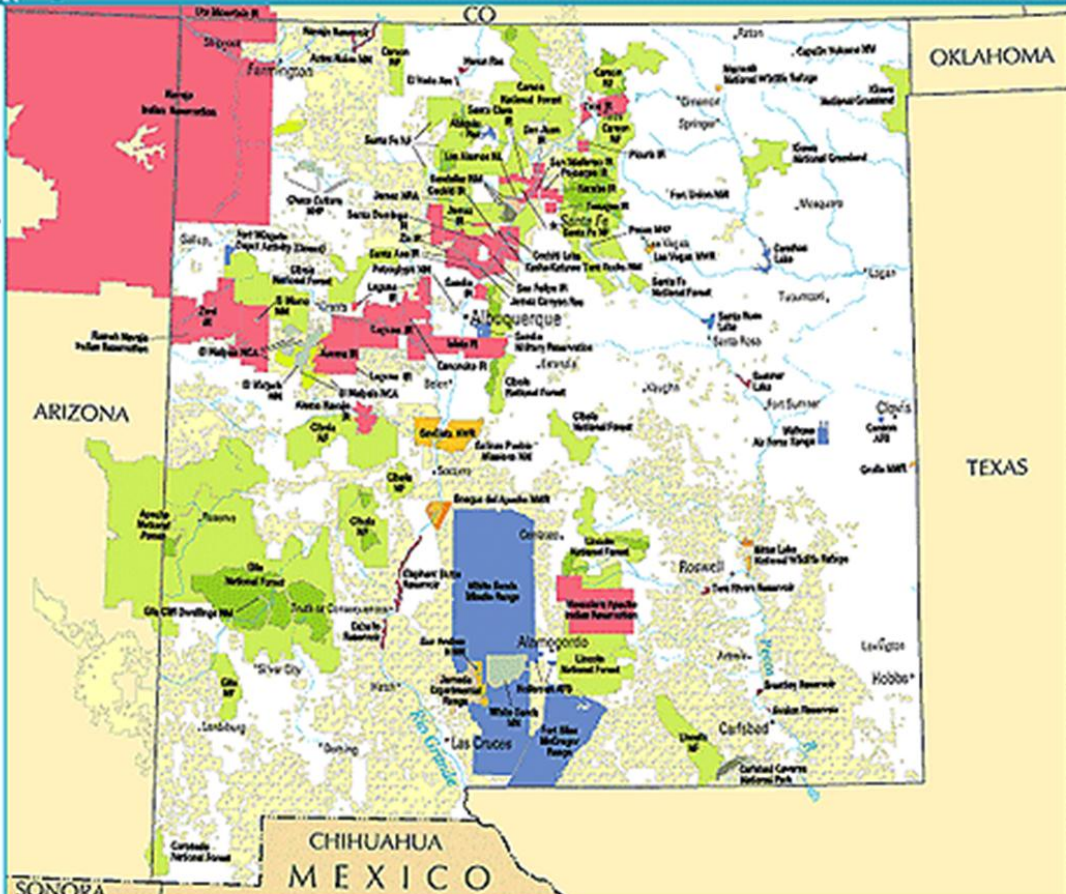
- Bureau of Indian Affairs
- Bureau of Land Management / Wilderness
- Bureau of Reclamation
- Department of Defense (Includes Army Corps of Engineers lakes)
- Fish and Wildlife Service / Wilderness
- Forest Service / Wilderness
- National Park Service / Wilderness
- Other agencies

Some small sites are not shown, especially in urban areas.



Abbreviations

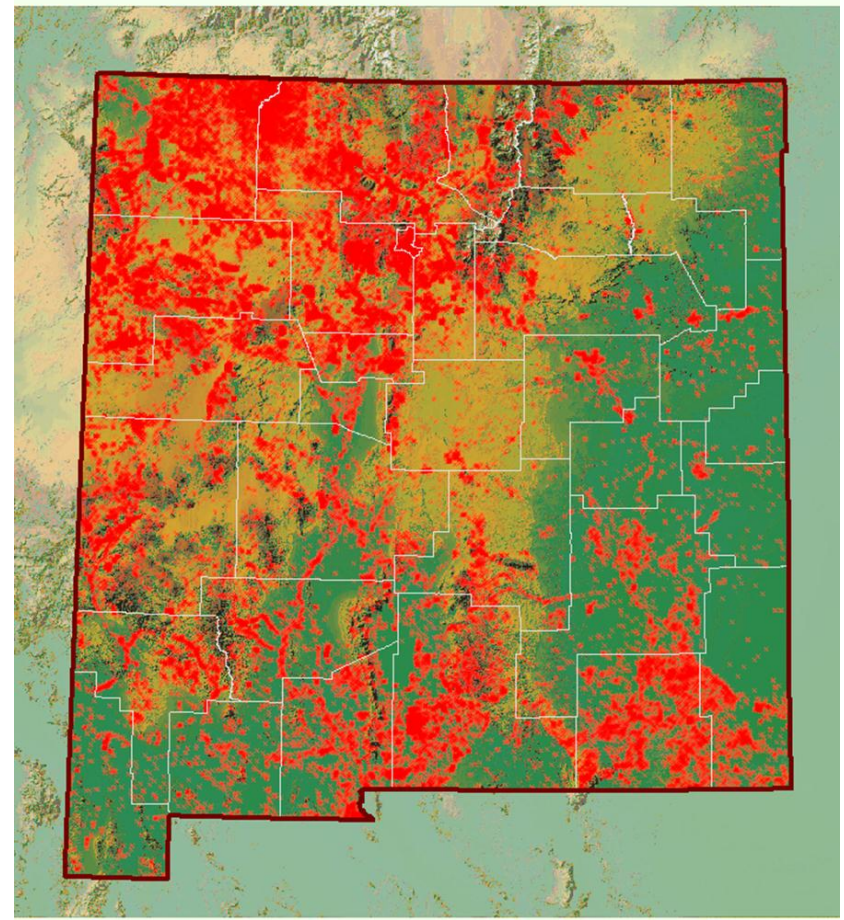
- AFB Air Force Base
- IR Indian Reservation
- NCA National Conservation Area
- NF National Forest
- NHP National Historical Park
- NL National Laboratory
- NM National Monument
- NRA National Recreation Area
- NWR National Wildlife Refuge
- Rm Ranch



New Mexico Cultural Resource Information System

- Prefield records check: >178,000 archaeological sites) &
- > 130,000 archaeological surveys
- About 70% State Register/National Register (2,000 + listings of > 8,000 individual properties

New Mexico Archeological Sites - February, 2005



Source: New Mexico Cultural Resource Information System
Caution: Objects on map are MUCH smaller than they appear

APEs: Archaeological Sites—the footprint of the proposed facility/all areas involving ground disturbance

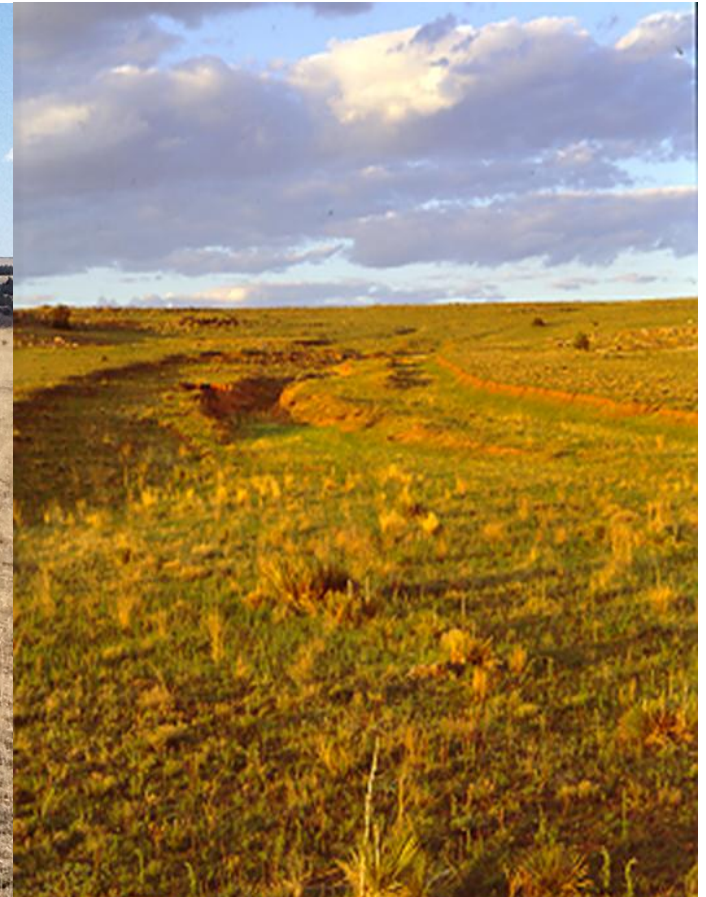


Cultural and Historic Landscapes:



APEs for above-ground historic resources and cultural landscapes:

- Visual & cumulative effects
- Distances vary (1 to 5 miles), depends on topography and nature of resource



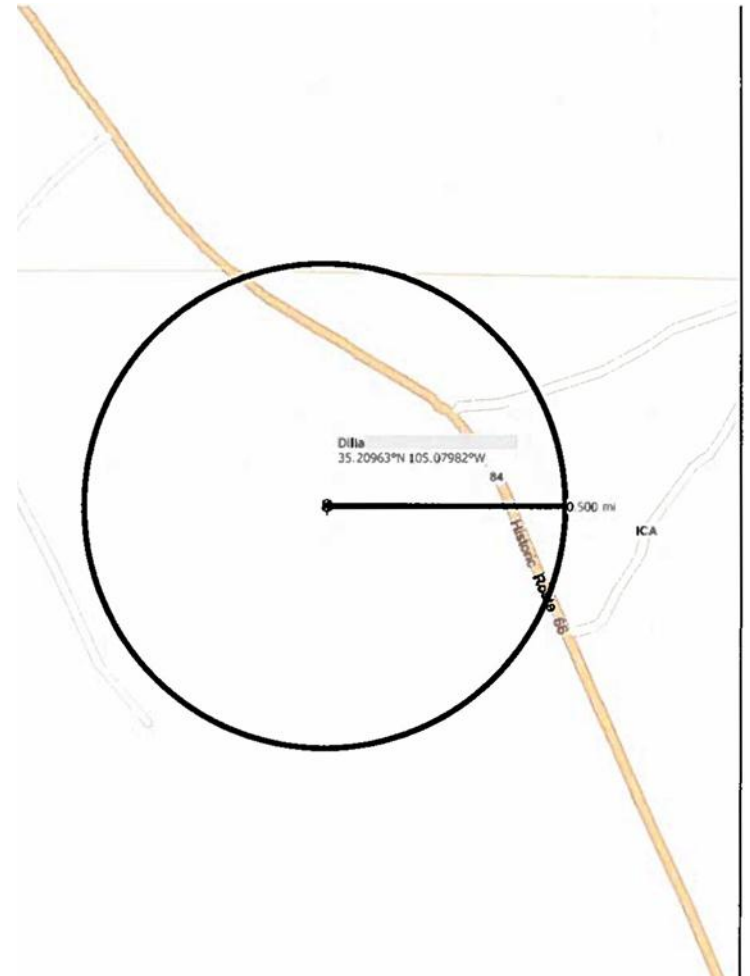


Cultural/Ethnographic Landscapes





Construction without Consultation



NMSHPO Guidance

- **Clear and concise description of proposed facility**
- **Map of project & APE**
- **Location of archaeological and historic sites/structures and/or other cultural properties in APE**
- **Photographs including visual effects simulations**

NMSHPO Guidance

- **Consult *prior* to construction**
- **Complete documentation is key to speedy review**
- **Visual effects should be carefully considered**
- **Good photographs are worth 1000+ words**
- **Tribal consultation is an on-going process**
- **(<http://nmhistoricpreservation.org>)**