



Open RAN Portfolio

~Shifting the Network Paradigm

Rajesh Gangadhar
CTO – Access Solutions, STL

<rajesh.gangadhar@stl.tech>



STL – A global tech leader of digital networks



A Global Tech Leader Integrating Digital Networks

That enables billions of people to have enriched digital experiences, transforming their lives

CAPABILITY

End-to-end solutions
tech capability

Wireless – Open RAN

Wireline – Open pFTTx

System Integration

CUSTOMER

Works with all network
creators



Telecom



Cloud Company



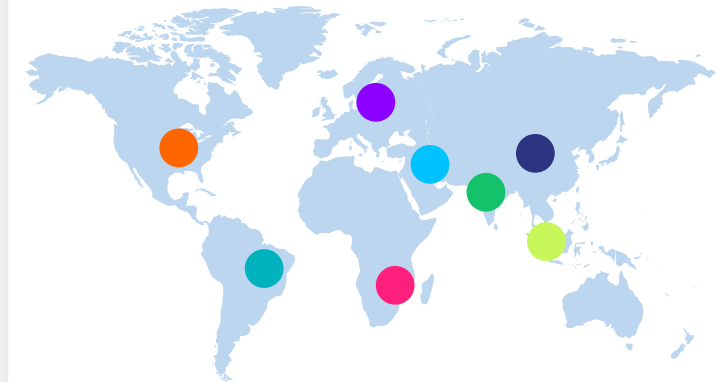
Citizen
Networks



Large
Enterprises

GLOBAL

Reach across the
Globe



HQ in India, with satellite office for Access Solutions in NJ, USA

Open Networking Access Solutions Portfolio



Open and Virtualized RAN

Open and virtualized RAN solution to enable 4G/5G

RAN Intelligent Controller (RIC)

Near real time monitoring and optimization of RAN

Programmable FTTx (pFTTx)

Cloud virtualized wireline access solution

Wifi 6 Access points

802.11ax enabled dual radio (5 & 2.4G)



Open and Virtualized RAN



5G ORAN compliant split 7.2x and split 2 RU with backward support for 4G LTE*

5G Indoor Small Cell

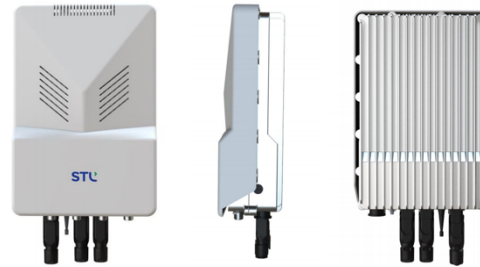


Split 7.2x

Split 2

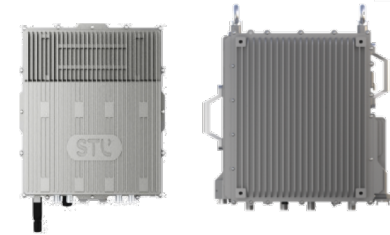
- SMD Indoors
- 1W 4x4 MIMO

5G Outdoor Small Cell



- Attach Outdoor
- 20W 4x4 MIMO

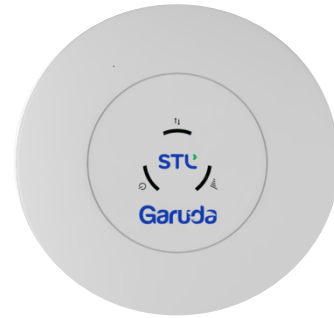
4G/5G Outdoor Multiband Macro Radio



- Multi Band RU
- 160W 4x4 MIMO
- 320W 4x4 MIMO

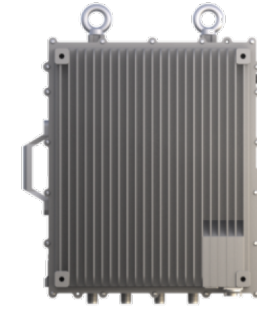
* For macro O-RUs

5G ready Small cell portfolio (GA by Jan'22)



Key Features	Indoor Split 7.2	Indoor Split 2	Outdoor Split 7.2	Outdoor Split 2
Technology	5G	5G	5G	5G
Frequency Range	FR1	FR1	FR1	FR1
ORAN Compliance	ORAN compliant with Split 7.2 RU	ORAN compliant with Split 2 DU-RU	ORAN compliant with Split 7.2 RU	ORAN compliant with Split 2 DU-RU
Power	4x250mW	4x250mW	4x250mW	4X5 Watt
Power Supply	48V POE++ Type -3 and 12V	48V POE++ Type -3 and 12V	48V	48V
Max Power Consumption	<40W	Approx. 60 Watt	<40W	Approx. 172 Watt
Max. Bandwidth	100 MHz	100 MHz	100 MHz	100 -200 MHz
Radio Config	4X4	4X4	4x4	4X4
Carrier Aggregation	1CC	1CC	1CC	2CC
Spectrum	3.5GHz, C-Band, n78	n77 ,3.5GHz	3.5GHz, C-Band, n78	3.5GHz, C-Band, n78
Fronthaul	Option 7.2,10G-SFP+	Option 2, 10G SFP/ 1G Ethernet	Option 7.2,10G-SFP+	Option 2, 10G SFP/ 1G Ethernet
Weight (with brackets)	1.3 Kg	2.5 Kg	1.8 Kg	4.5 Kg
Volume	1.5 L	3.5 L	2 L	4.5 L
IP Rating	IP 31	IP 31	IP 65	IP 65

Macro radio portfolio (GA by Jan'22)

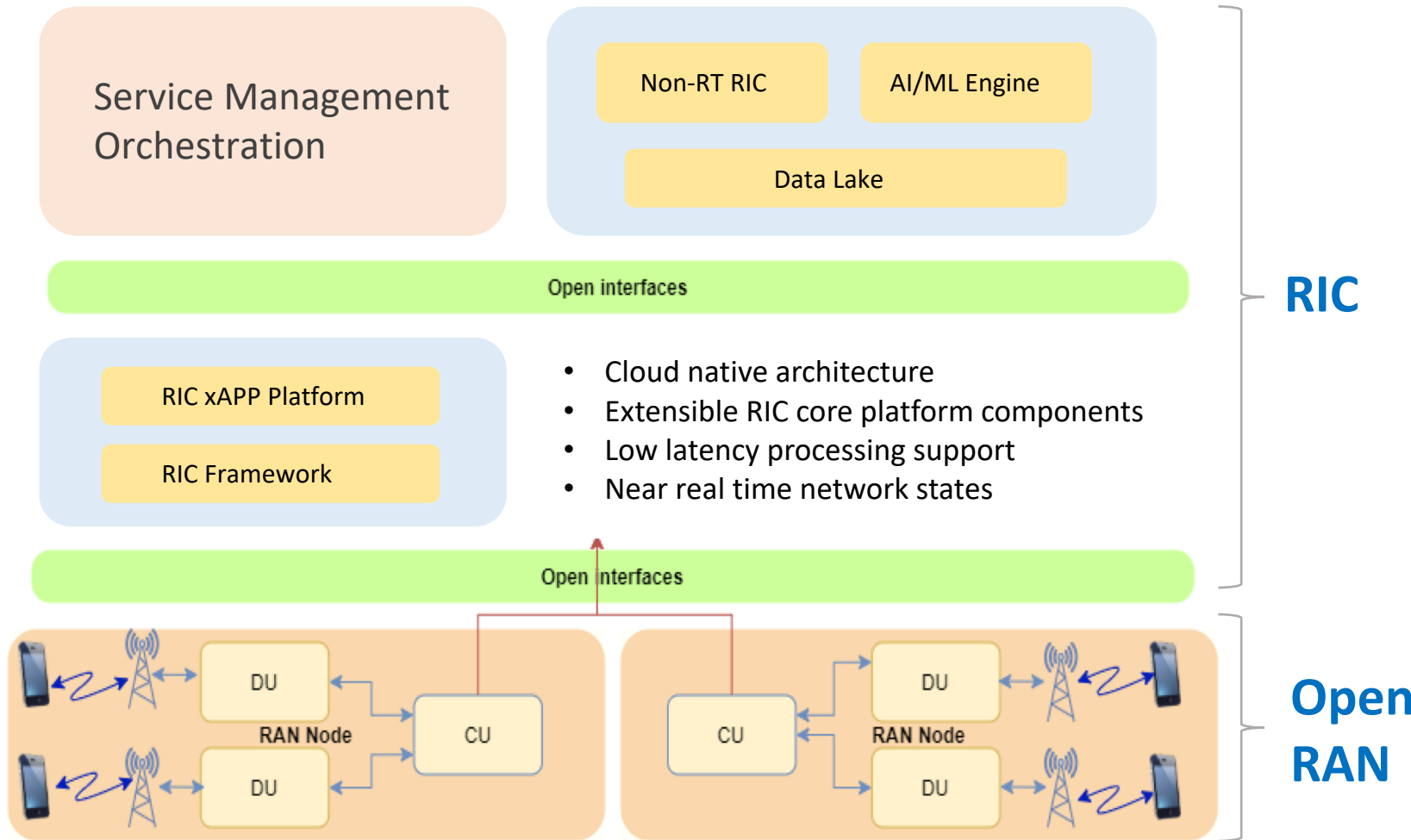


Key Features	B1/n1 FDD Macro RU	B41/n41 TDD Macro RU	5G Dual Band Macro RU	5G Tri Band Macro RU
Deployment Type	Macro RU, Split7.2x Category -A	Macro RU, Split7.2x Category -A	Macro RU, Split7.2x Category -A	Macro RU, Split7.2x Category -A
Frequency Band	n1 , FDD DL (2110 – 2170)/UL (1920 – 1980)	n41 , TDD (2496-2690)	As per customer requirement	As per customer requirement
Radio Configuration	2 CC , NR+LTE, 4Tx4R	2 CC , NR+LTE, 4Tx4R	NR, (4T4R)	NR, (4T4R)
IBW/OBW	60 MHz / 40 MHz	100 MHz / 60 MHz	As per customer requirement	As per customer requirement
Channel bandwidth	LTE -5/10/20 MHz, NR – 5/10/15/20/25/30/40 MHz	LTE -5/10/20 MHz, NR – 5/10/15/20/25/30/40/50/100 MHz	NR- 5/10/15/20/30 MHz	NR- 5/10/15/20/30 MHz
Output Power	4x40W	4x40W	4x80W	4x80W
Fronthaul	Option 7-2x, 25G-SFP28	Option 7-2x, 25G-SFP28	Option 7-2x, 10G-SFP28	Option 7-2x, 10G-SFP28
Typical Power Consumption	715W (at 80% loading)	680W (at 80% Loading)	1200W (at 100% Loading)	> 1200W (at 100% Loading)
Weight/Vol	~15Kg / 16L	~15Kg / 16L	<30 kg / 32L	<35 kg / 38L
3GPP Compliance	Rel-15 Software Upgradable to Rel-16	Rel-15 Software Upgradable to Rel-16	Rel- 15, Software Upgradable to Rel 16	Rel- 15, Software Upgradable to Rel 16
Synchronization	GPS & IEEE1588	GPS & IEEE1588	GPS & IEEE1588	GPS & IEEE1588
Power Supply	48 V	48 V	48 V	48 V

RAN Intelligent Controller (RIC)



RIC – High Level Design and Value Proposition

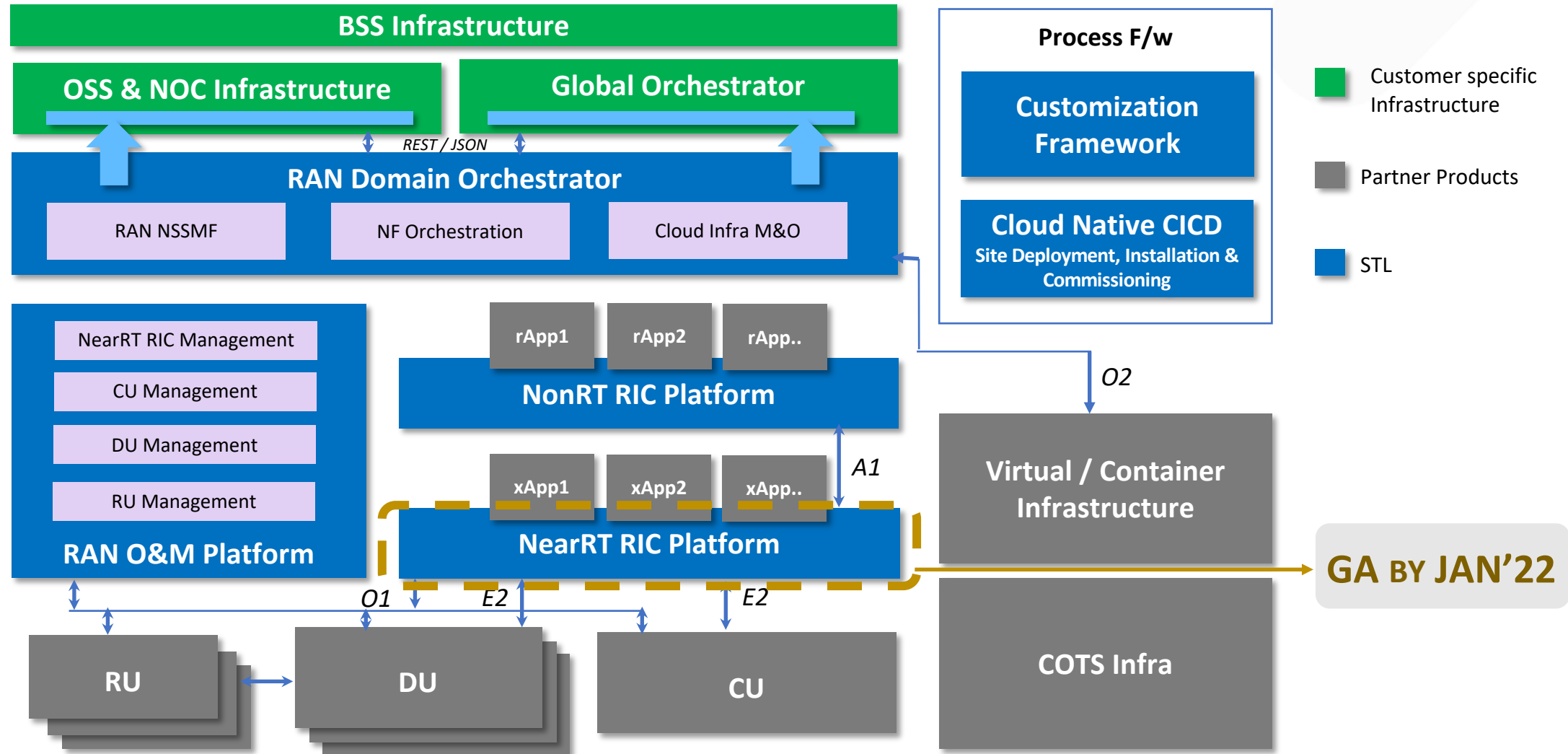


VALUE PROPOSITION:

- Network control back to operators
- Increase operational efficiencies
- Quick enablement of network slicing to serve concurrent use cases
- Efficient radio resource management
- Supports low latency applications
- AI/ML driven network control

STL RAN Intelligent Controller (RIC) Portfolio

Handling E2E automation across all layers



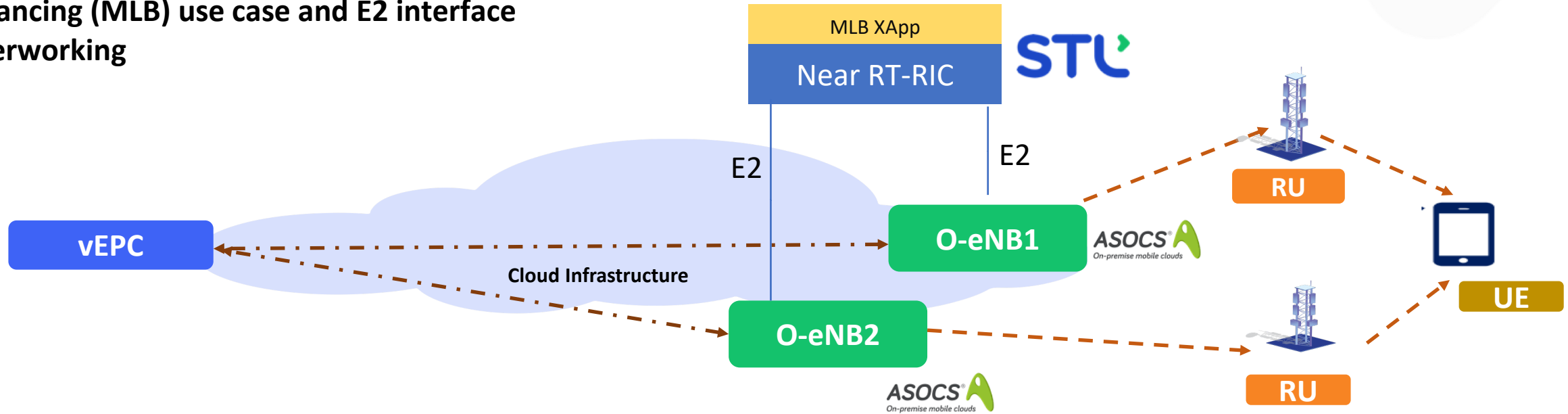
Demonstration of near RT RIC interworking with O-eNB

Demo at ORAN Plugfest in Sept '20, hosted by Bharti Airtel, India

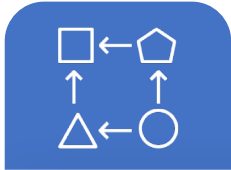


Successful demonstration of Mobile Load Balancing (MLB) use case and E2 interface interworking

MLB and E2 Setup/Subscription



Our E2E integrated RAN solutions include



Programmable solutions

Better network control



ORAN compliant RUs

Faster time to market



Cloud native solutions

Easily scalable and agile



Best of breed equipment

Network excellence



Enhanced security

Faster update cycle



COTS deployment

Better inventory management



beyond tomorrow